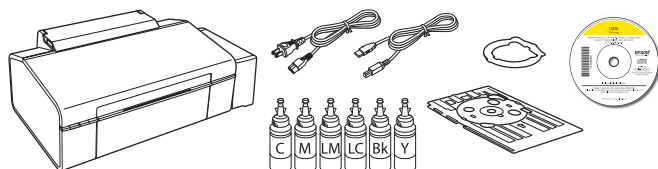


# L805 Start Here

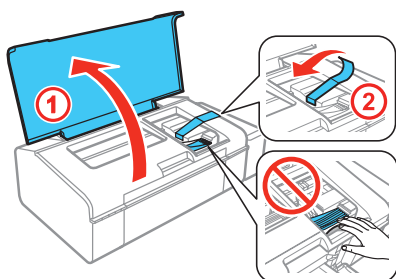
*Read these instructions before using your product.*

## 1 Unpack



**Note:** Do not open the ink bottles until you are ready to fill the ink tanks. The ink bottles are vacuum packed to maintain reliability.

Remove all protective materials from the product.



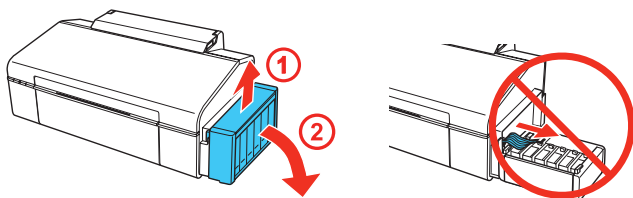
**Caution:** Do not touch the flat white cable or the ink tubes and their translucent cover.

## 2 Fill ink tanks

**Note:** This product requires careful handling of ink. Wear disposable gloves and place a sheet of paper under the ink tank unit when you fill or refill the ink tanks, as ink may splatter. If ink spills, wipe it off immediately with a damp towel to avoid permanent stains. If ink gets on your clothes or belongings, it may not come off.

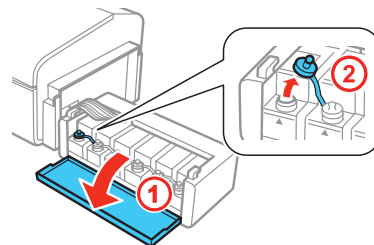
**Caution:** Keep the ink bottles out of the reach of children and do not drink the ink.

### 1 Unhook the ink tank unit.

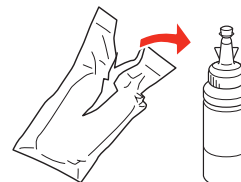


**Note:** Don't pull the cables.

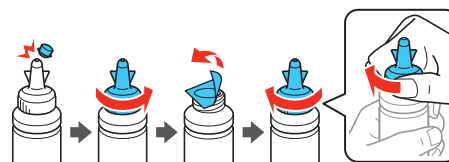
### 2 Open the ink tank unit cover, then remove the cap for the first ink tank.



### 3 Unpack the cyan ink bottle.

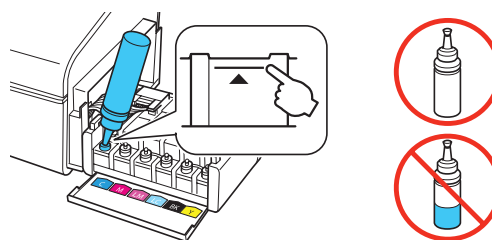


### 4 Snap the bottle tip off, then remove the bottle cap. Carefully remove the protective seal (avoid touching the ink underneath the seal), then close the bottle cap **tightly**.



**Caution:** Be sure to close the bottle cap tightly, or ink may leak.

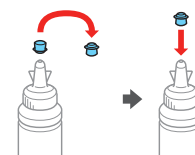
### 5 Fill the tank up to the upper line on the ink tank using all of the ink in the bottle.



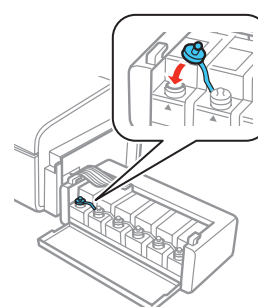
**Note:** Refer to the color coded sticker on the ink tank unit cover to identify the color of each tank.

**Caution:** Be sure to fill each tank with the correct ink color.

### 6 Carefully seal the bottle using the reverse side of the bottle tip for proper disposal.



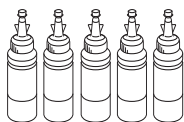
### 7 Replace the ink tank cap securely.



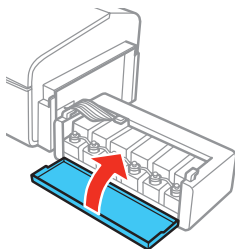
\*413038500\*

**EPSON**  
EXCEED YOUR VISION

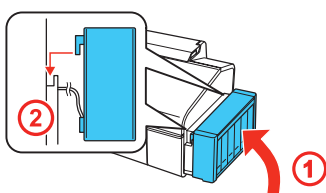
- 8** Repeat the previous steps for the remaining bottles.



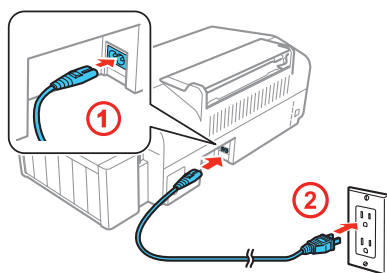
- 9** Close the ink tank unit cover.






- 10** Hook the ink tank unit onto the product.

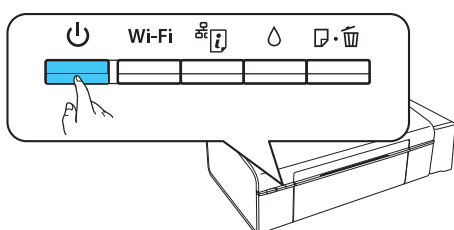


- 11** Connect the power cord to the back of the product and to an electrical outlet.






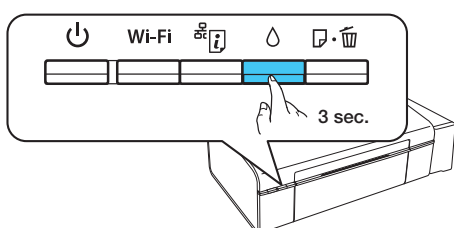
**Caution:** Do not connect to your computer yet.

- 12** Press the  power button to turn on the product. Wait for the  power light and the  ink light to stop flashing.

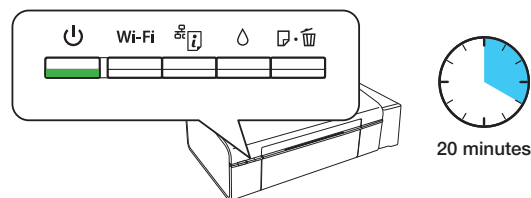


**Note:** If all the product lights are flashing, turn off the product and check that no protective material has been left inside the product.

- 13** Press and hold the  ink button for **3 seconds** until the  power light and the  ink light start to flash to begin charging the ink.



Ink charging takes approximately 20 minutes. Ink charging is complete when the  power light stops flashing.

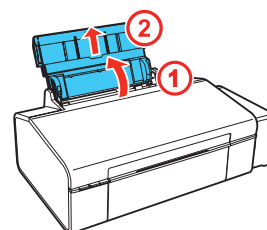


**Note:** The ink bottles included with the printer are designed for printer setup and not for resale. After some ink is used for charging, the rest is available for printing.

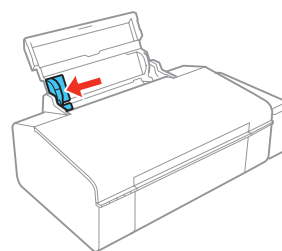
**Caution:** Do not turn off the product or load paper while the product is charging or you'll waste ink.

## 3 Load paper

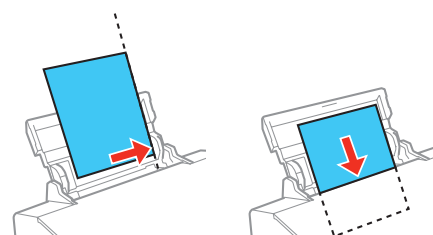
- 1** Make sure the product is not charging ink. Then raise the paper support.



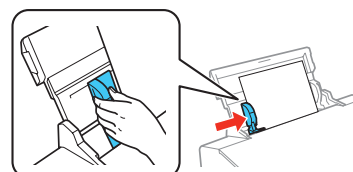
- 2** Slide the edge guide to the left.



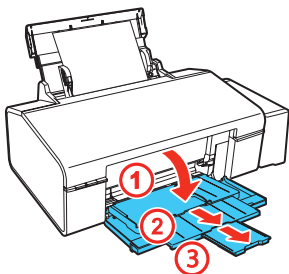
- 3** Load paper, glossy or printable side up and short edge first, against the right side of the rear paper feed slot.



- 4** Slide the edge guide against the paper, but not too tightly.



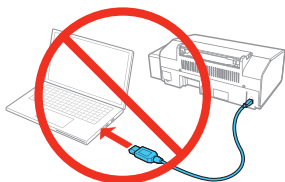
- 5 Extend the output tray.



## 4 Install software

**Note:** If your computer does not have a CD/DVD drive or you are using a Mac, an Internet connection is required to obtain the product software.

- 1 Make sure the product is **NOT CONNECTED** to your computer.



**Windows®:** If you see a Found New Hardware screen, click **Cancel** and disconnect the USB cable.

- 2 Insert the product CD or download and run your product's software package:

[global.latin.epson.com/Support/L805](http://global.latin.epson.com/Support/L805)

- 3 Follow the instructions on the screen to run the setup program.

**OS X:** Make sure you install Epson Software Updater to receive firmware and software updates for your product.

- 4 When you see the Select Your Connection screen, select one of the following options and follow the on-screen instructions:

- **Wireless connection**

In most cases, the software installer automatically attempts to set up your wireless connection. If setup is unsuccessful, you may need to enter your network name (SSID) and password.

- **Direct USB connection**

Make sure you have the USB cable ready.

- 5 When software installation is complete, restart your computer.

## Mobile printing

To print from a mobile device, your product must be set up for wireless printing. See the online *User's Guide* for instructions.

### Epson Connect™ Solutions

Epson Connect offers a variety of remote printing options for your product. Connect wirelessly from your tablet, smartphone, or computer. Print documents and photos from across the room or around the world.

[latin.epson.com/connect](http://latin.epson.com/connect) (website available in Spanish)

### Epson iPrint™ for iOS/Android™

Download the Epson iPrint app from Google Play™ or the App Store to print documents and photos from your iOS or Android device on any email-enabled Epson® printer.

## Any problems?

### Network setup was unsuccessful.

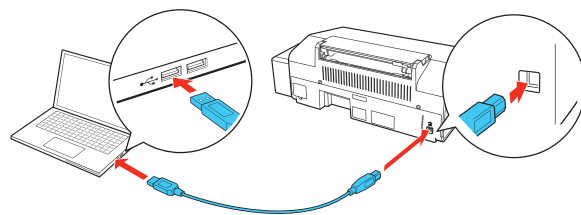
- For detailed instructions on setting up your product on a wireless network, see the online *Network Installation Guide*.
- Make sure you select the right network name (SSID). The product can only connect to a network that supports 2.4 GHz.
- If you see a firewall alert message, click **Unblock** or **Allow** to let setup continue.
- If your network has security enabled, make sure you enter your network password (WEP key or WPA passphrase) correctly. Passwords must be entered in the correct case.

### There are lines or incorrect colors in my printouts.

Run a nozzle check to see if any of the print head nozzles are clogged. Then clean the print head, if necessary. See the online *User's Guide* for more information.


### Setup is unable to find my product after connecting it with a USB cable.








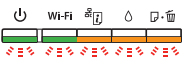
Make sure the product is on and securely connected as shown:



Error indicators

If you see one of the error indicators below, follow these steps to proceed.

 **Flashing**       **On**

	Paper is jammed. Remove any jammed paper from inside the product or from the rear paper feed slot. Make sure your paper is loaded correctly, then press the  paper button.
	Paper is out or multiple pages have fed into the rear paper feed slot. Load paper correctly in the rear paper feed slot, then press the  paper button.
	Initial ink charging may not be complete. Be sure to complete the steps in the “Fill ink tanks” section.
	The printer cover is open. Close the printer cover before printing.
	Wi-Fi connection error. Press the Wi-Fi button on the product to clear the error and try again. For detailed instructions on setting up your product on a wireless network, see the online <i>Network Installation Guide</i> .
	Printer error. Turn off the product. Open the printer cover and check that no protective material, paper, or other foreign object has been left inside the product. Turn on the product again.

See the online *User’s Guide* for additional troubleshooting information.

You can also speak to a service technician by calling one of these numbers:

<b>Argentina</b>	(54 11) 5167-0300 0800-288-37766	<b>Honduras**</b>	800-0122 Code: 8320
<b>Bolivia*</b>	800-100-116	<b>Mexico</b>	01-800-087-1080
<b>Chile</b>	(56 2) 2484-3400	<b>Mexico City</b>	(52 55) 1323-2052
<b>Colombia</b>	018000-915235	<b>Nicaragua*</b>	00-1-800-226-0368
<b>Bogota</b>	(57 1) 523-5000	<b>Panama*</b>	00-800-052-1376
<b>Costa Rica</b>	800-377-6627	<b>Paraguay</b>	009-800-521-0019
<b>Dominican Republic*</b>	1-888-760-0068	<b>Peru</b>	0800-10126
<b>Ecuador*</b>	1-800-000-044	<b>Lima</b>	(51 1) 418-0210
<b>El Salvador*</b>	800-6570	<b>Uruguay</b>	00040-5210067
<b>Guatemala*</b>	1-800-835-0358	<b>Venezuela</b>	(58 212) 240-1111

\* Contact your local phone company to call this toll free number from a mobile phone.

\*\* Dial the first 7 digits, wait for a message, then enter the code.

If your country does not appear on the list, contact your nearest Epson sales office. Toll or long distance charges may apply.







Need paper and ink?

Try Epson specialty inks and papers to get good results. You can purchase them from an Epson authorized reseller. To find the nearest one, visit [global.latin.epson.com](http://global.latin.epson.com) or contact Epson as described in “Any questions?” on this sheet.



DESIGNED *for* EXCELLENCE™  
Epson printers, ink and specialty papers.

L805 refill inks

Color	Part number
 Cyan	673
 Magenta	673
 Light Magenta	673
 Light Cyan	673
 Black	673
 Yellow	673



Any questions?

Network Installation Guide

Go to [global.latin.epson.com/Support/L805](http://global.latin.epson.com/Support/L805), click on **Online Support & Manuals** and click on **Network Installation Guide** to view detailed information on how to set up your product on a Wi-Fi network.

User’s Guide

**Windows:** Click the icon on your desktop or Apps screen to access the online *User’s Guide*.

**OS X:** Click the icon in **Applications/Epson Software/Guide** to access the online *User’s Guide*.

If you don’t have a User’s Guide icon, go to the Epson website, as described below.

Technical support

Visit [global.latin.epson.com/Support/L805](http://global.latin.epson.com/Support/L805) to download drivers, view manuals, get FAQs, or e-mail Epson.



EPSON is a registered trademark, Epson Connect and Epson iPrint are trademarks, and EPSON Exceed Your Vision is a registered logomark of Seiko Epson Corporation. Designed for Excellence is a trademark of Epson America, Inc.

Mac and OS X are trademarks of Apple Inc., registered in the U.S. and other countries. App Store is a service mark of Apple Inc.

Android and Google Play are trademarks of Google Inc.

General Notice: Other product names used herein are for identification purposes only and may be trademarks of their respective owners. Epson disclaims any and all rights in those marks.

This information is subject to change without notice.

© 2015 Epson America, Inc., 8/15

Printed in XXXXXX

CPD-50126